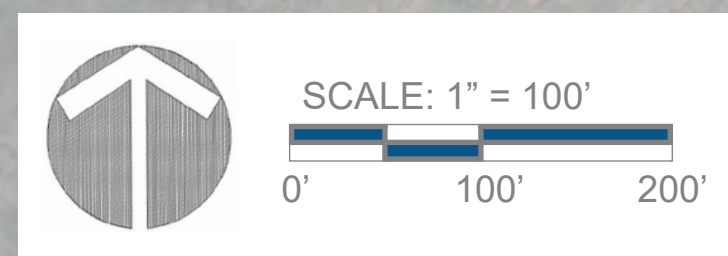
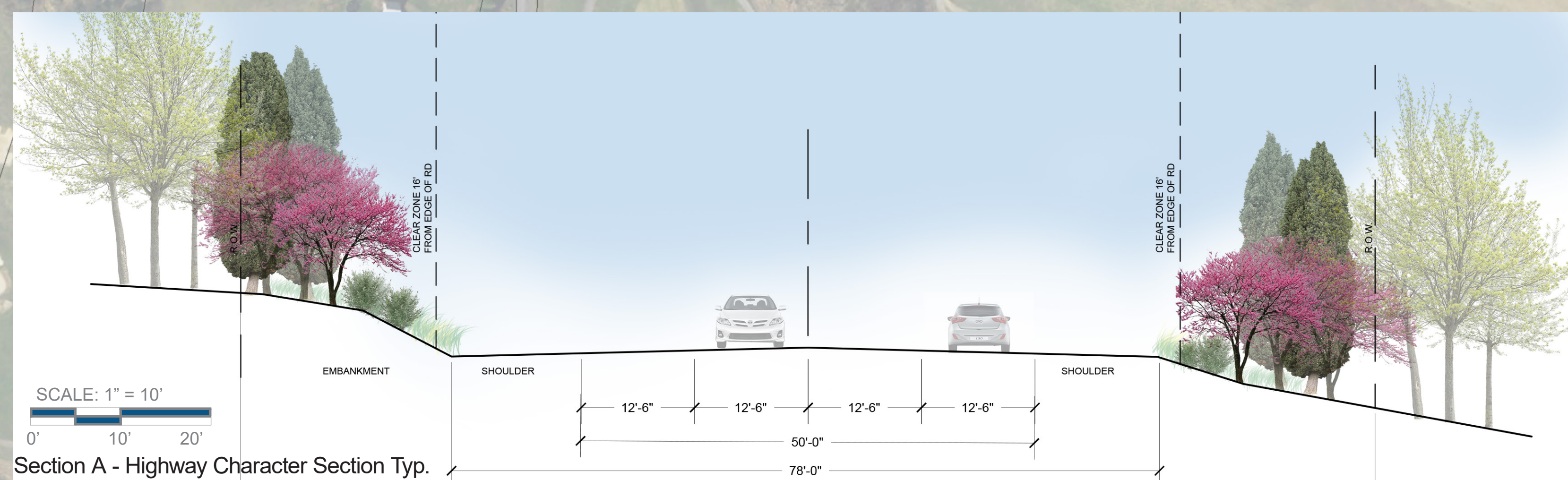


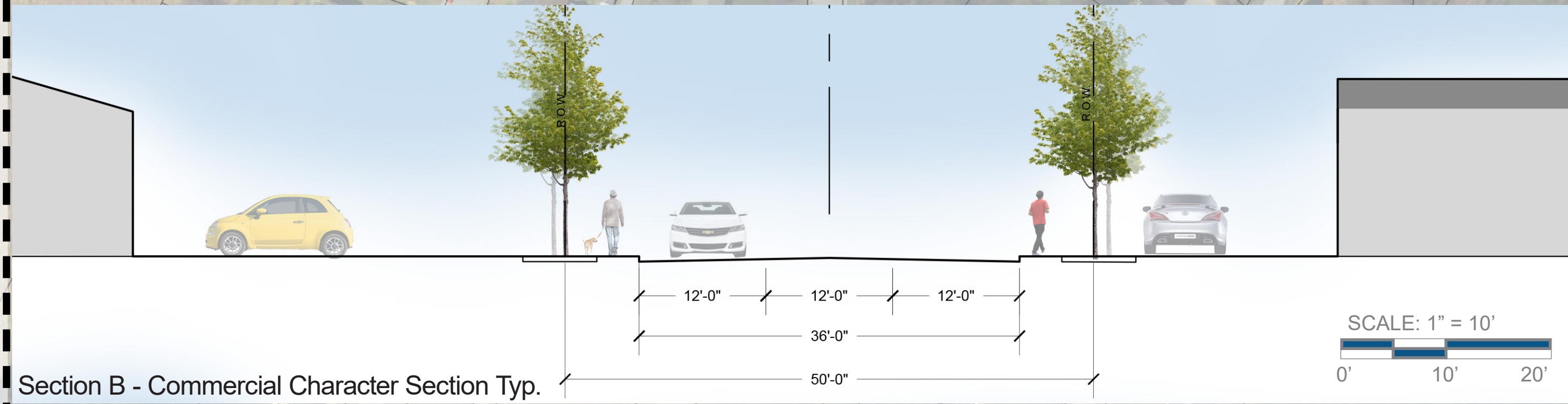
Legend

- Ornamental Tree
- Canopy Tree
- Coniferous Tree
- Meadow
- Large Shrub

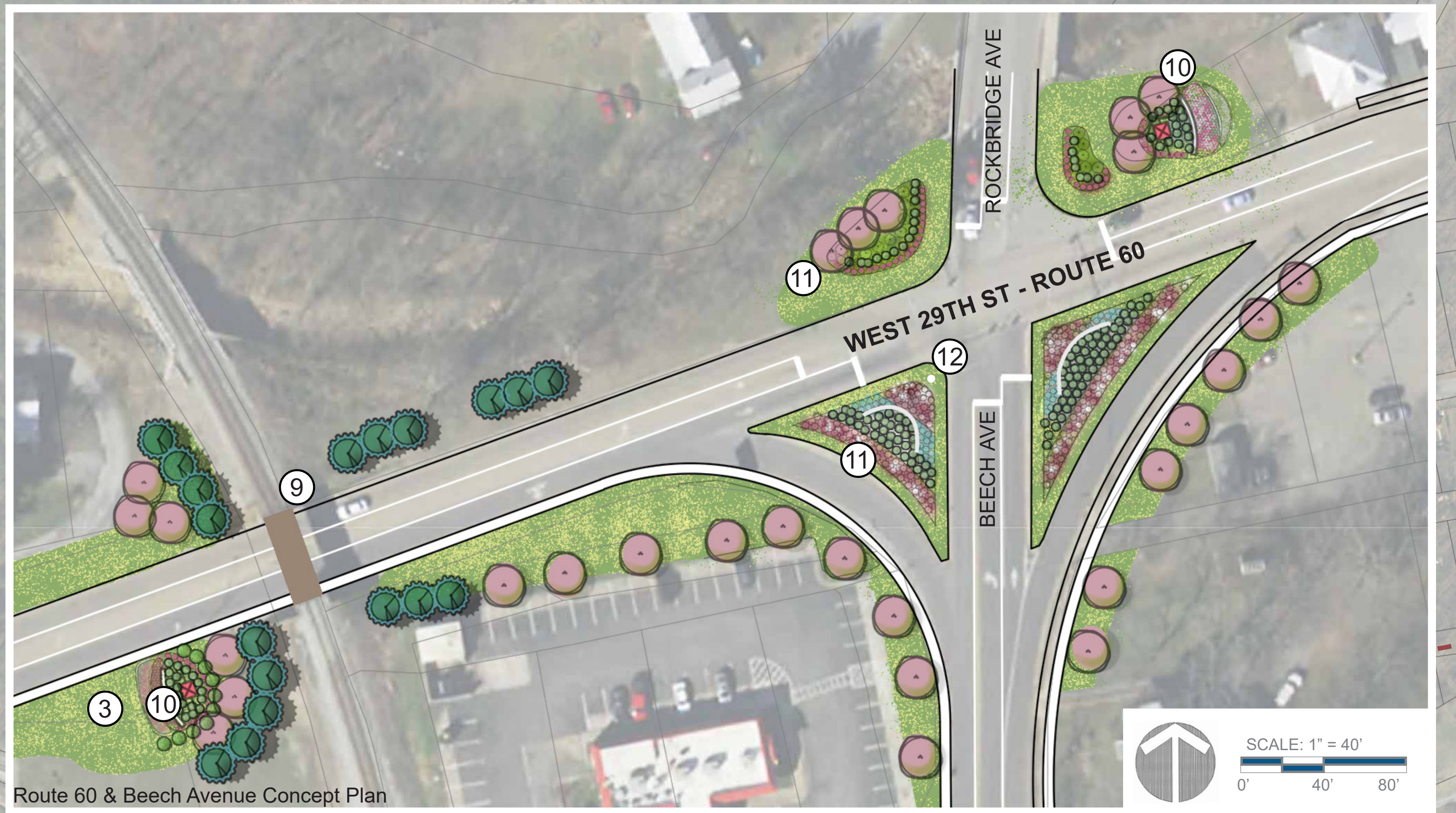
KEY

- ① Gateway Landscaping into City of Buena Vista
- ② Key Intersection Backplanted with Trees
- ③ Native Shrub Planting along Highway Embankment
- ④ Native Meadow
- ⑤ Sidewalk Begins
- ⑥ Retaining Wall backplanted above with Native Shrubs
- ⑦ Existing Pedestrian Crossing
- ⑧ River Walk Multi-Use Trail
- ⑨ Potential Mural Location
- ⑩ Light Installation on Old Smokestack
- ⑪ Views of Mountains and the Maury River





- Legend**
- Ornamental Tree
 - Canopy Tree
 - Coniferous Tree
 - Meadow
 - Large Shrub



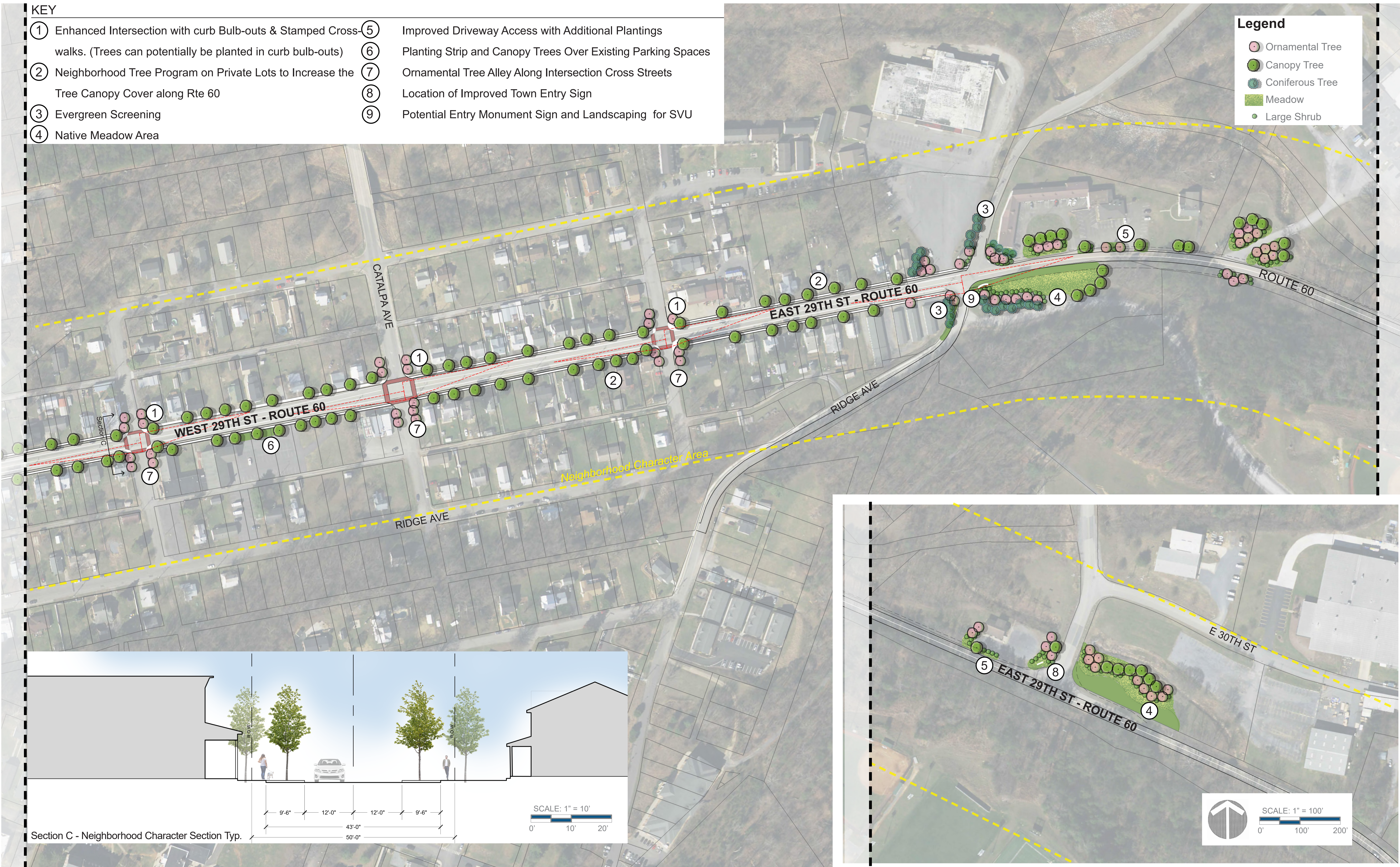
- KEY**
- ① Shrub Planting Along Sidewalk
 - ② Evergreen Screening
 - ③ Native Meadow Area
 - ④ Redefined & Improved Driveway Access
 - ⑤ Planted Buffer w/ Shade Trees & Shrubs
 - ⑥ Proposed Planting Strip Over Ex. Parking Sp
 - ⑦ River Walk Multi-Use Trail
 - ⑧ Ex. Speed Limit 25mph Sign
 - ⑨ Painted Railroad Underpass to be More Attractive
 - ⑩ Town Entry Sign with Terrace Wall and Plantings
 - ⑪ Low Growing Perennials and Shrub Massings
 - ⑫ Trail Blazer Sign at Point of Intersection

KEY

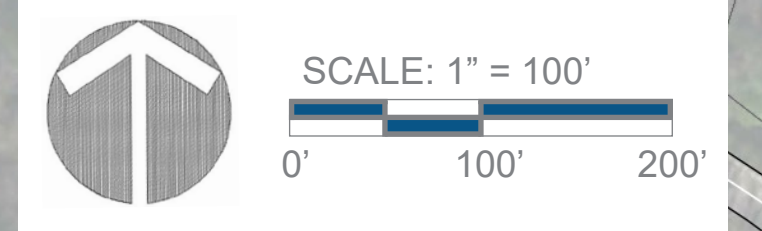
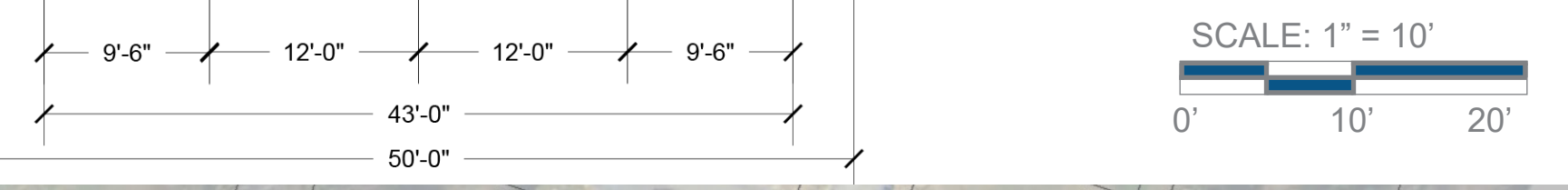
- ① Enhanced Intersection with curb Bulb-outs & Stamped Cross-walks. (Trees can potentially be planted in curb bulb-outs)
- ② Neighborhood Tree Program on Private Lots to Increase the Tree Canopy Cover along Rte 60
- ③ Evergreen Screening
- ④ Native Meadow Area
- ⑤ Improved Driveway Access with Additional Plantings
- ⑥ Planting Strip and Canopy Trees Over Existing Parking Spaces
- ⑦ Ornamental Tree Alley Along Intersection Cross Streets
- ⑧ Location of Improved Town Entry Sign
- ⑨ Potential Entry Monument Sign and Landscaping for SVU

Legend

- Ornamental Tree
- Canopy Tree
- Coniferous Tree
- Meadow
- Large Shrub



Section C - Neighborhood Character Section Typ.



Evergreen Trees



American Holly - *Ilex opaca*



Topal Holly - *Ilex x attenuate*



Virginia Pine - *Pinus virginiana*



Northern White Cedar - *Thuja occidentalis 'Techny'*



Eastern Red Cedar - *Juniperus virginiana 'burkii'* or 'idyllwild'

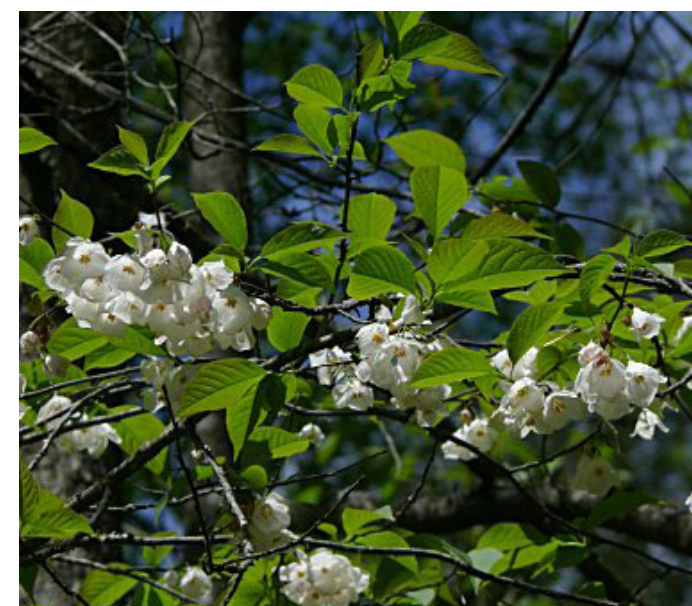
Small Trees



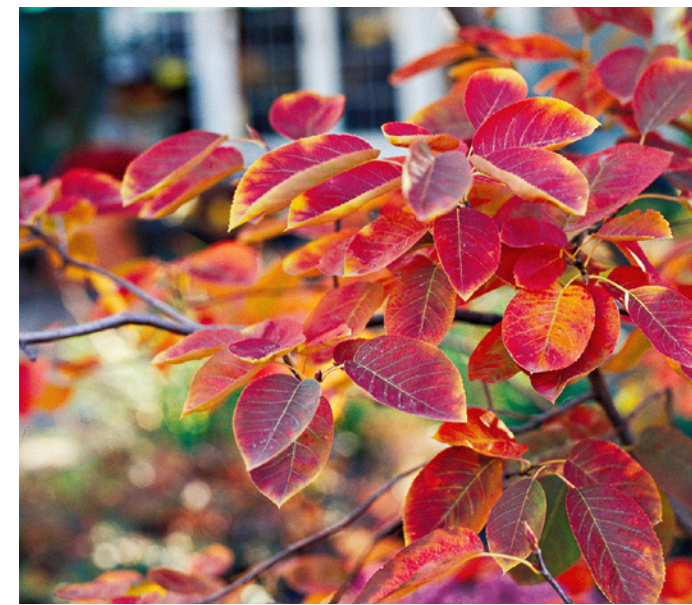
Sweetbay Magnolia - *Magnolia virginiana*



Fringe Tree - *Chionanthus virginicus*



Mountain Silverbell - *Halesia tetraptera*



Serviceberry - *Amelanchier alboria 'autumn brilliance'*



American Hornbeam - *Carpinus caroliniana*



Eastern Redbud - *Cercis canadensis 'rising sun'*



Staghorn Sumac - *Rhus typhina*



American Smoketree - *Cotinus obovatus*



Grey Owl Juniper - *Juniperus virginiana 'grey owl'*



Sourwood - *Oxydendrum arboreum*

Canopy Trees



River Birch - *Betula nigra*



Red Maple - *Acer rubrum*



Black Gum/Tupelo - *Nyssa sylvatica*



Swamp White Oak - *Quercus bicolor*



American Sweetgum - *Liquidambar styraciflua*

Shrubs



bottlebrush buckeye - *Aesculus parviflora*



Chokeberry - *Aronia arbutifolia*



Summersweet Clethra - *Clethra alnifolia (ruby spice)*



Red-Twig Dogwood - *Cornus sericea (baileyi)*



Fothergilla - *Fothergilla x intermedia (blue shadow)*



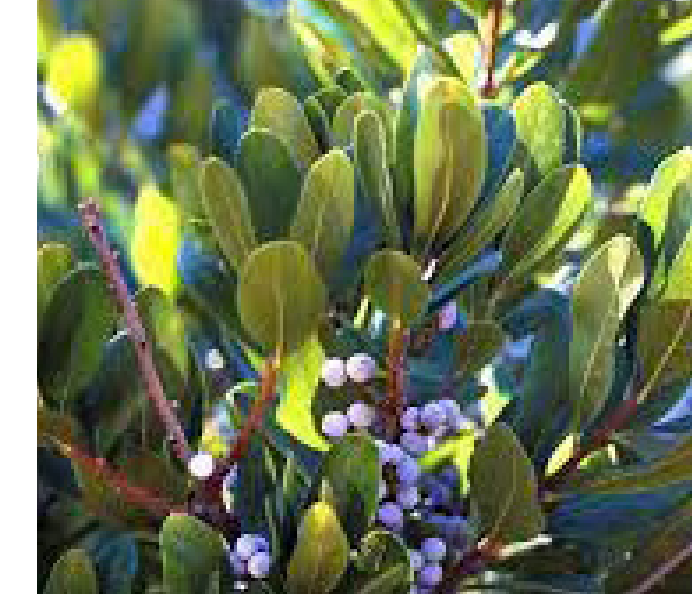
Sparkle Berry - *Ilex verticillata x sparkle berry*



Gro-Low Sumac - *Rhus aromatica (gro-low)*



Allegheny viburnum - *Viburnum rhytidophyllum*



Bayberry - *Myrica pensylvanica*



Arrowwood Viburnum - *Viburnum dentatum*

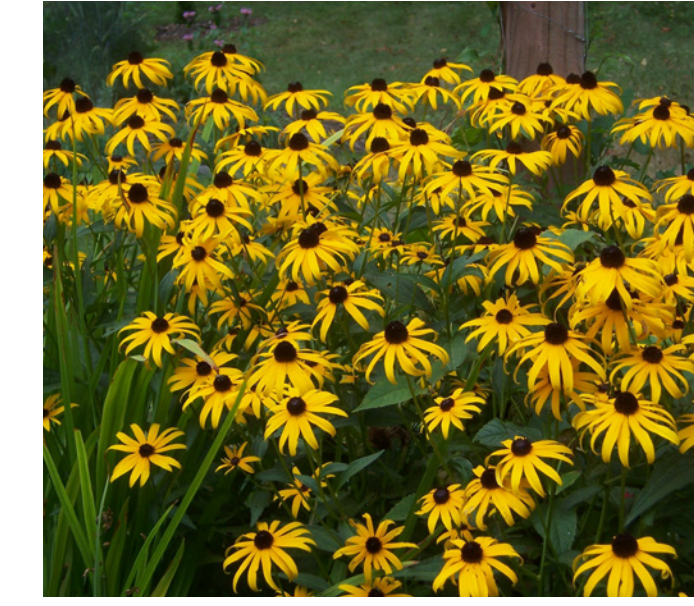
Meadow Mix



Little Bluestem - *Schizachyrium scoparium*



Virginia Wildrye - *Elymus virginicus*



Blackeyed Susan - *Rudbeckia fulgida*



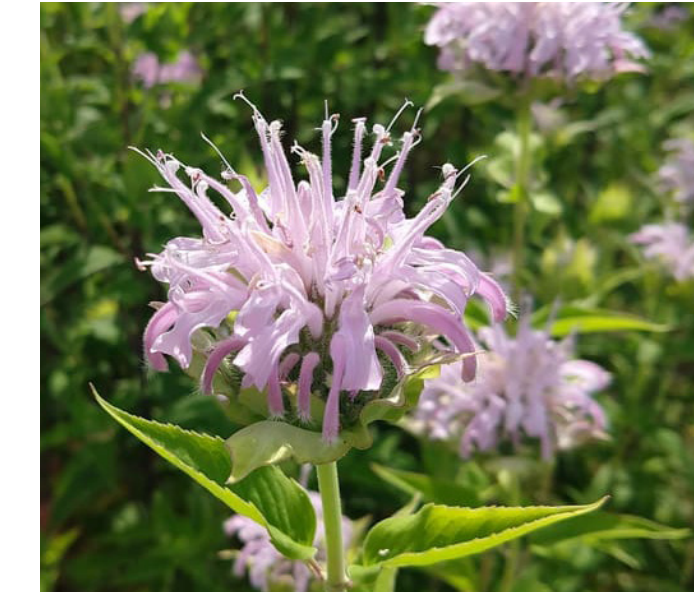
Calico Aster - *Aster lateriflorus*



Narrowleaf Mountainmint - *Pycnanthemum tenuifolium*



Butterfly Milkweed - *Asclepias tuberosa*



Wild Bergamot - *Monarda fistulosa*



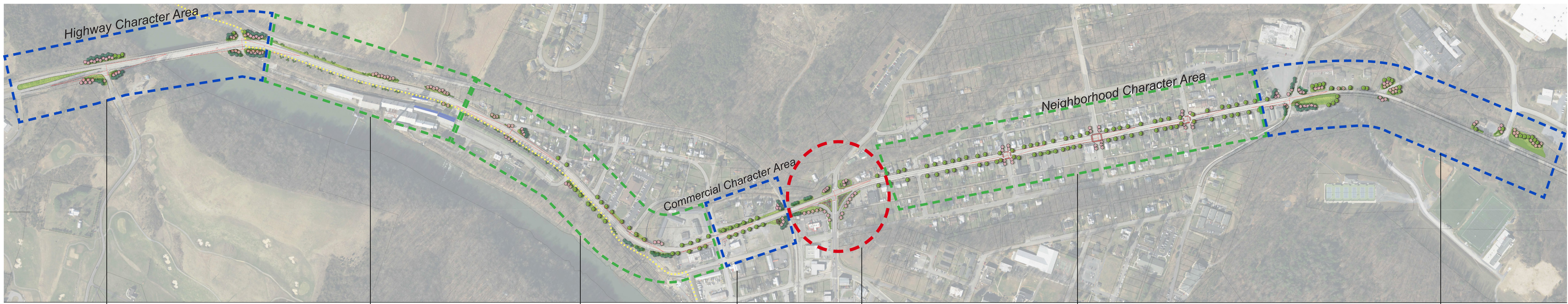
Goldenrod - *Solidago rugosa*



Broomsedge - *Andropogon virginicus*



Switchgrass - *Panicum virgatum*



Phase 2 Planting Priority Area- Western Gateway Landscape

Phase 3 Planting Plan Priority Area- Highway Transition Landscape

Phase 3 Planting Priority Area Commercial Landscape

Phase 2 Planting Priority Area Railroad Threshold

Phase 1 Planting Plan Priority Area 29th Street and Beech Intersection

Phase 3 Planting Plan Priority Area Neighborhood Landscape

Phase 2 Planting Priority Area Eastern Gateway Landscape



PHASING	DESCRIPTION	PRIORITY	TIMING
Phase 1 Planting Plan Priority Area- 29th Street and Beech Intersection	Intersection plantings which include low growing perennials and shrub massings	High	In progress
Phase 2 Planting Priority Area- Western Gateway Landscape	Gateway landscape into City, native meadow plantings, key intersections backplanted with trees, native shrub plantings along highway embankments	Medium	year 1 - 5
Railroad Threshold	Native meadow area with town entry sign with terrace wall and plantings	Medium	year 1 - 5
Eastern Gateway Landscape	Gateway landscape with Improved Town entry sign, Potential entry monument sign and landscaping for SVU	Medium	year 1 - 5
Phase 3 Planting Plan Priority Area- Highway Transition Landscape	Retaining wall backplanted above with native shrubs, landscape along River Walk Multi-Use Trail, potential mural, light installation on old smokestack	Low	year 5-10
Commercial Landscape	Native meadow area, Redefined & improved driveway access along Rte 60, Planted buffer w/ shade trees & shrubs, proposed planting strip over ex.parking sp.	Medium	year 1 - 5
Neighborhood Landscape	Enhanced intersection with curb bulb-outs & stamped crosswalks, neighborhood tree program on private lots to increase the tree canopy cover along Rte 60, evergreen screening, native meadow area, improved driveway access with additional plantings, planting strip and canopy trees over existing parking spaces, ornamental tree alley along intersection cross streets	Low	year 5-10

SCIENTIFIC NAME	COMMON NAME	SIZE	COND.	SPACING
Recommended Plants <i>Land Planning & Design Associates, Inc.</i>				
Large Trees				
Acer rubrum 'Autumn Flame'	Red Maple	4" CAL	B&B	SINGLE CENTRAL LEADER, FULL BRANCHING
Betula nigra 'Dura Heat'	'Dura Heat' River Birch	10'-12'	B&B	SINGLE CENTRAL LEADER, FULL BRANCHING
Liquidambar styraciflua	Sweetgum	3" CAL	B&B	SINGLE CENTRAL LEADER, FULL BRANCHING
Nyssa sylvatica 'Green Gable'	'Green Gable' Black Gum	3" CAL	B&B	SINGLE CENTRAL LEADER, FULL BRANCHING
Quercus bicolor	Swamp White Oak	3" CAL	B&B	SINGLE CENTRAL LEADER, FULL BRANCHING
Quercus rubra	Northern Red Oak	3" CAL	B&B	SINGLE CENTRAL LEADER, FULL BRANCHING
Gymnocladus dioica	Kentucky Coffeetree	3" CAL	B&B	SINGLE CENTRAL LEADER, FULL BRANCHING
Platanus occidentalis	Sycamore	3" CAL	B&B	SINGLE CENTRAL LEADER, FULL BRANCHING
Quercus coccinea	Scarlet Oak	3" CAL	B&B	SINGLE CENTRAL LEADER, FULL BRANCHING
Quercus phellos	Willow Oak	3" CAL	B&B	SINGLE CENTRAL LEADER, FULL BRANCHING
Small/Medium Trees				
Magnolia virginiana 'Jim Wilson -Moonglow'	Sweetbay Magnolia			SINGLE CENTRAL LEADER, FULL BRANCHING
Amelanchier arborea 'Autumn Brilliance'	Autumn Brilliance Serviceberry	8' - 10' HT	B&B	MULTI-STEM- 3+ CLUMP
Colinus obovatus	American Smoketree	8' - 10' HT	B&B	SINGLE CENTRAL LEADER, FULL BRANCHING
Halesia tetraptera	Mountain Silverbell	8' - 10' HT	B&B	SINGLE CENTRAL LEADER, FULL BRANCHING
Cercis canadensis 'rising sun'	Red Bud	8' - 10' HT	B&B	SINGLE CENTRAL LEADER, FULL BRANCHING
Chionanthus virginicus	Fringetree	8' - 10' HT	B&B	SINGLE CENTRAL LEADER, FULL BRANCHING
Carpinus caroliniana	Musclewood	8' - 10' HT	B&B	SINGLE CENTRAL LEADER, FULL BRANCHING
Oxydendrum arboreum	Sourwood	8' - 10' HT	B&B	SINGLE CENTRAL LEADER, FULL BRANCHING
Rhus typhina	Staghorn Sumac	8' - 10' HT	B&B	MULTI-STEM- 3+ CLUMP
Cornus x (rutgers hybrids)	Dogwood	8' - 10' HT	B&B	SINGLE CENTRAL LEADER, FULL BRANCHING
Magnolia virginiana 'Jim Wilson -Moonglow'	Sweetbay Magnolia			SINGLE CENTRAL LEADER, FULL BRANCHING
Evergreen Trees				
Ilex opaca 'Satyr Hill'	American Holly	8' - 10' HT	B&B	SINGLE CENTRAL LEADER, FULL BRANCHING
Pinus virginiana	Virginia Pine	8' - 10' HT	B&B	SINGLE CENTRAL LEADER, FULL BRANCHING
Magnolia virginiana 'Jim Wilson -Moonglow'	Sweetbay Magnolia	8' - 10' HT	B&B	SINGLE CENTRAL LEADER, FULL BRANCHING
Tuja occidentalis 'Techny'	Northern White Cedar	8' - 10' HT	B&B	SINGLE CENTRAL LEADER, FULL BRANCHING
Juniperus virginiana 'Burkii'	Eastern Red Cedar	8' - 10' HT	B&B	SINGLE CENTRAL LEADER, FULL BRANCHING
Evergreen Shrubs				
Ilex glabra 'Compacta'	Compact Inkberry	18"-24"	#3	UNIFORM SIZE AND SHAPE
Juniperus virginiana 'Grey Owl'	'Grey Owl' Juniper	36"-40"	#5	UNIFORM SIZE AND SHAPE
Myrica cerifera	Wax Myrtle	36"-40"	#5	UNIFORM SIZE AND SHAPE
Shrubs				
Aesculus parviflora	Bottlebrush buckeye	18"-24"	#3	UNIFORM SIZE AND SHAPE, 6' O.C.
Aronia arbutifolia	Chokeberry	18"-24"	#3	UNIFORM SIZE AND SHAPE, 48" O.C.
Clethra alnifolia 'Ruby Spice'	Summersweet Clethra	18"-24"	#3	UNIFORM SIZE AND SHAPE, 48" O.C.
Cornus sericea 'Bailey'	Bailey Red-Twig Dogwood	18"-24"	#3	UNIFORM SIZE AND SHAPE, 36" O.C.
Fothergilla x intermedia 'Blue Shadow'	Fothergilla	15"-18"	#3	UNIFORM SIZE AND SHAPE, 48" O.C.
Ilex verticillata x Sparkle Berry	Sparkle Berry	36"-40"	#5	UNIFORM SIZE AND SHAPE, 48" O.C.
Rhus aromatica 'Gro-low'	'Gro-low' Sumac	18"-24"	#3	UNIFORM SIZE AND SHAPE, 48" O.C.
Myrica pennsylvanica	Bayberry	36"-40"	#3	UNIFORM SIZE AND SHAPE
V.x rhytidophylloides 'Allegheny'	'Allegheny' Viburnum	18"-24"	#3	UNIFORM SIZE AND SHAPE, 48" O.C.
Grasses				
Andropogon virginicus	Broomsedge	12"-24"	#1	FULL ROOTED CLUMP, 36" O.C.
Elymus virginicus	Virginia Wild Rye	12"-24"	#1	FULL ROOTED CLUMP, 36" O.C.
Panicum virgatum 'Shenandoah'	Shenandoah Switch Grass	12"-24"	#1	FULL ROOTED CLUMP, 36" O.C.
Schizachyrium scoparium 'The Blues'	Little Bluestem	12"-24"	#1	FULL ROOTED CLUMP, 24" O.C.
Perennials				
Eupatorium purpureum	Joe Pye Weed	varies	#1	18" O.C.
Achillea millefolium	Common Yarrow	varies	#1	18" O.C.
Aster lateriflorus	Calico Aster	varies	#1	18" O.C.
Asclepias tuberosa	Butterfly Weed	varies	#1	18" O.C.
Solidago rugosa	Goldenrod	varies	#1	18" O.C.
Rudbeckia fulgida	Black Eyed Susan	varies	#1	18" O.C.
Muhlenbergia capillaris	Pink Muhly Grass	varies	#1	FULL ROOTED CLUMP, 30" O.C.
Nepeta x faassenii 'Walker's Low'	Walker's Low Catmint	varies	#1	#1 CONT.
Pycnanthemum tenuifolium	Narrow Leaf Mountainmint	varies	#1	18" O.C.